



**CALIFORNIA
EXOTIC
PEST PLANT
COUNCIL**

**A nonprofit organization
protecting California's
natural areas from
wildland weeds through
restoration, research,
and education**

Board of Directors

Joe DiTomaso, President
U.C. Davis Weed Science Program

Steve Schoenig, Vice-President
California Dept. of Food & Agriculture

Mona Robison, Secretary
U.C. Davis Weed Sciences Program

Becky Waegell, Treasurer
*The Nature Conservancy, Cosumnes
River Preserve*

Mike Kelly, Past-President
*Friends of Los Peñasquitos Canyon
Preserve*

Carla Bossard
St. Mary's College of California

Matt Brooks
*U.S. Geological Survey, Western
Ecological Resource Center*

Deanne DiPietro
Sudden Oak Death Research Program

Tom Dudley
*U.C. Berkeley Department of
Integrative Biology*

Dawn Lawson
U.S. Navy Facilities, Southwest Division

Carri Pirosko
California Dept. of Food & Agriculture

Mike Pitcairn
California Dept. of Food & Agriculture

Alison Stanton
BMP Ecosciences

Scott Steinmaus
*California Polytechnic University,
San Luis Obispo*

Peter Warner
California State Parks

Bill Winans
*San Diego County Watershed
Management Program*

*(Affiliations for identification
purposes only)*

**1442A Walnut St., #462
Berkeley, CA 94709**

**Ph: (510) 525-1502
Fax: (510) 217-3500
Email: dwjohnson@caleppc.org**

On the Web: www.CalEPPC.org

June 9, 2003

Janet K. Clark, Director
Center for Invasive Plant Management
Montana State University
P.O. Box 173120
Bozeman, MT 59717

RE: Invoice for completed project #GC170-02-Z1138

I am writing to invoice for \$8,000 for the completed "Weed Ranking and Inventory Project." The ranking system is available online at http://groups.ucanr.org/ceppc/CalEPPC_List_Criteria/.

The ranking system has been developed in collaboration with representatives from Arizona and Nevada. This aided in their process of developing a weed list similar to CalEPPC's. The system has been designed to be applicable to any of the three states, and it can easily be adapted for use by other states.

Experts assembled for development of the criteria are now using the criteria to rank invasive plants in their respective states. The process will engage the expertise of many weed workers throughout the region, who can contribute their studies and observations to the effort. The end result will be scientifically grounded, transparent rankings that will constitute the best available information on invasive plant threats. This information will in turn provide a foundation for planning weed control strategies, and for formulating public policy on these plants.

Please feel free to contact me with any questions regarding the project. We consider it to be a great success, and are grateful for the support from CIPM.

Sincerely,

Doug Johnson
Executive Director



Main Menu

Organization
Info

Membership

Projects

Documents

Useful Links

CalEPPC List Criteria

Cal-EPPC, in conjunction with the Southwest Vegetation Management Association and representatives from Nevada, have developed a new criteria for categorizing invasive plants that threaten wildlands. This set of criteria allows an evaluator to assess the ecological impact, the invasiveness, and the distribution of a particular plant. These ratings lead to an overall category for the plant. Documentation is required for all assessments.

The criteria, with the Plant Assessment Form (PAF), is available in an [electronic version](#) and a [printable version](#). The electronic version provides pull-down menus for the evaluator to record ratings and cite documentation, and is preferred for submission of evaluations to the committee. The printable version is meant to facilitate note taking while gathering information.

How You Can Help

If you're interested in evaluating plants for the revised list, see [Plants to be Evaluated](#) for those that remain. Evaluators are asked to submit filled in PAFs to the representative of the list committee for their state. These contacts are noted at the end of the forms. For assistance with the PAF, please contact [Peter Warner](#). A working group about the new criteria and using the PAFs will be held at the 2004 Cal-EPPC Symposium.

We currently have good information on many of the plants previously listed—what we need most is observations from those in the field on the plants that have not yet been researched extensively. This is your opportunity to help catch invasive plants that are still at the early stages of infestation. View the spreadsheet of [Plants to be Evaluated](#) to see which plants need more information.

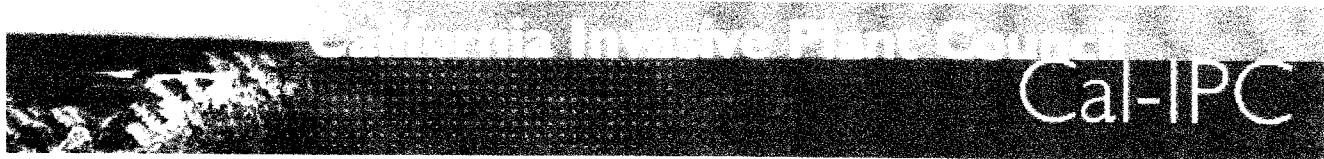
View completed evaluations for the revised list:

Completed PAFs

- [Alhagi maurorum](#)
- [Allium triquetrum](#)
- [Brassica tournefortii](#)
- [Bromus tectorum](#)
- [Carpobrotus chilensis](#)
- [Centaurea calcitrapa](#)
- [Centaurea melitensis](#)
- [Centaurea solstitialis](#)
- [Cirsium arvense](#)
- [Conium maculatum](#)
- [Crupina vulgaris](#)
- [Digitalis purpurea](#)
- [Egeria densa](#)
- [Helichrysum petiolare](#)
- [Hypochaeris radicata](#)
- [Isatis tinctorial](#)
- [Lolium multiflorum](#)

- ☞ Mentha pulegium
- ☞ Nothoscordum gracile
- ☞ Ononis alopecuroides
- ☞ Oxalis pes-caprae
- ☞ Tamarix ramosissima
- ☞ Zantadeschia aethiopica

E-Mail [Web Master](#)



search

Membership

Projects

Documents

Our Mission:

The California Exotic Pest Plant Council (CalEPPC) works to protect California wildlands from invasive plants through research, restoration, and education. [more info](#)

Join us for [Symposium 2003](#) in Tahoe!

News Updates:

6/11/03 [Organizing a weed tour for Invasive Weeds Awareness Week](#)

4/28/03 [Funding to control aquatic weeds without herbicides](#)

4/21/03 [OSH, Home Depot remove invasives](#)

3/27/03 [Progress in Cape ivy biocontrols](#)

3/20/03 [Ask Rep. Pombo to take action on HR 119 weed act](#)

1/27/03 [International Broom Initiative seeks USDA funding](#)

1/16/03 [More cuts proposed for California weed programs](#)

1/6/03 [Owens River EIR needs weed funding](#)

12/27/02 [Wal-Mart stops selling pampas grass in California](#)

12/20/02 [2003 Symposium set for North Tahoe Oct. 2-4](#)

[CalEPPC List](#) of invasive plants in California wildlands

[Invasive Plants of California Wildlands](#) book online

NEW BOOK! [Aquatic and Riparian Weeds of the West](#)

[Nursery Sustainability](#) program

[CALIWAC](#) California Invasive Weed Awareness Coalition

[Contact us](#)



Documents in pdf format require Adobe Acrobat Reader. Get it free at:

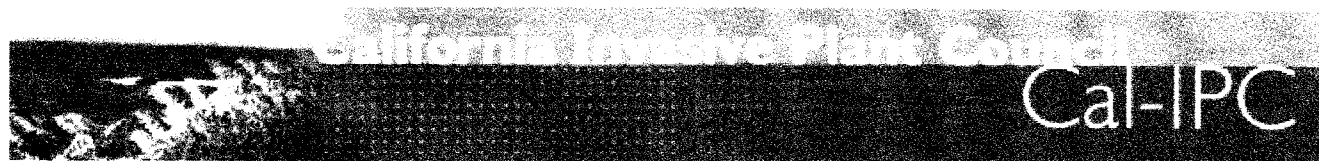


California Exotic Pest Plant Council
1442-A Walnut St., #462
Berkeley, CA 94709

(510) 525-1502
djohnson@caleppc.org

Site was last updated on: 24-Sep-03 08:15 PM

E-Mail [Web Master](#)



search

California Exotic Pest Plant Council *Organization Info*

All over California, natural wildlands are under attack by invasive pest plants. As native habitat is lost to exotic plants, we also lose many species of birds, insects, fish and other wildlife. People concerned about the protection, management and enjoyment of our natural areas have become increasingly concerned about the alarming spread of invasive exotic vegetation. The California Exotic Pest Plant Council (CalEPPC) is finding solutions to problems caused by non-native pest plant invasions of the state's wildlands.

- Board of Directors
- Working Groups
- Group Members

Membership

Projects

Documents

It has been estimated that invasive pest plants cost California hundreds of millions of dollars an

- Tamarisk, or salt cedar, infests 1.5 million acres in wetland and riparian areas in the American West. These trees use more water than native species and sterilize the soil.
- Arundo, or giant reed, fuels dangerous wildfires, causes local flooding, consumes more water and eliminates native plants and wildlife habitat.
- Pampas grass invades and degrades habitats along the entire California coastline.
- Eucalyptus fuels disastrous fires in the Oakland Hills, in Santa Barbara, and elsewhere.

CalEPPC proposes and facilitates solutions to such problems caused by invasive plants. Our membership includes public and private land managers, ecological consultants and researchers, planners, and concerned citizens. Cal-EPPC is recognized as the authoritative source of new information on wildland weed management. We

- hold a major statewide symposium each October, and co-sponsor regional workshops on species control;
- produce a list of "Invasive Plants that Threaten Wildlands" that is used by land managers;
- publish a quarterly newsletter with timely, practical information on wildland weeds in the state;
- support biocontrol research efforts through the International Broom Initiative and the California Invasive Plant Research projects;
- advance public and professional awareness of wildland weed problems and solutions.

Notices, articles, and inquiries on all aspects of invasive plant biology, ecology, control, and management are welcome. Please contact:

Doug Johnson
 Executive Director, CalEPPC
 1442-A Walnut Street, #462
 Berkeley, CA 94709
 Email: dwjohanson@caleppc.org

E-Mail [Web Master](#)



Membership

Join us to help protect California's natural ecosystems from invasive plants!

CalEPPC is a membership-driven organization. The collective efforts of the land managers, researchers, volunteer stewards and concerned citizens that make up CalEPPC have been on the forefront of invasive plant issues in California for over a decade. We welcome individuals and organizations concerned about invasive exotic plants in California's wildlands. CalEPPC members:

- Receive the quarterly *CalEPPC News* with late breaking information on pest plants and control methods
- Attend CalEPPC's annual symposium to share updates on research and control
- Network with researchers, land managers and local activists
- Participate in CalEPPC working groups to achieve tangible, on the ground results

Memberships are on a calendar year basis, January to December. If you join mid-year before the annual symposium held in October, you will be mailed the year's previous issues of *CalEPPC News*. If you join after the symposium, your membership extends through the following calendar year. CalEPPC offers special benefits to institutional members at the contributing level or above.

Print the **membership form** and mail with your payment to:

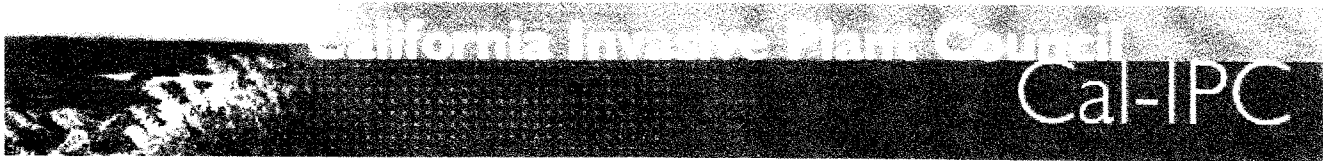
CalEPPC Membership
1442-A Walnut Street, #462
Berkeley, CA 94709

510/525-1502
Email: dwijohnson@caleppc.org

E-Mail [Web Master](#)

Projects

Documents



[search](#)

California Exotic Pest Plant Council *Projects*

CalEPPC List

Cal-EPPC's categorized list of pest plants of ecological concern in California

Publications

Books, newsletters, symposium proceedings

Documents

International Broom Initiative seeks USDA funding

Nursery Sustainability

Working with nurseries and consumers to limit the number of invasive plants available through the horticultural trade.

CALIWAC

The California Invasive Weed Awareness Coalition (CALIWAC) is a coalition of private sector groups promoting awareness of weed issues in California

Working Groups

Contacts and meeting notes from working groups on single species or issues

The Brooms

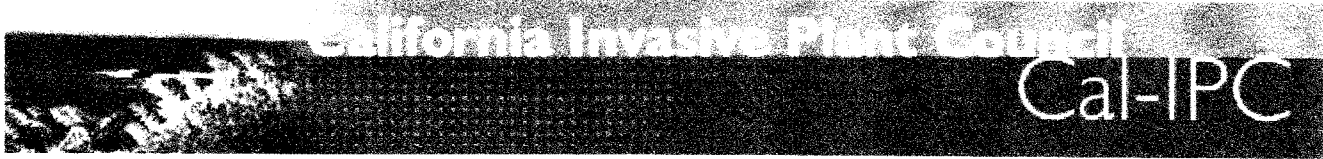
Video available for purchase.

Yellow Starthistle

Video available for purchase and short video clips viewable on the web.

Landscaping Alternatives

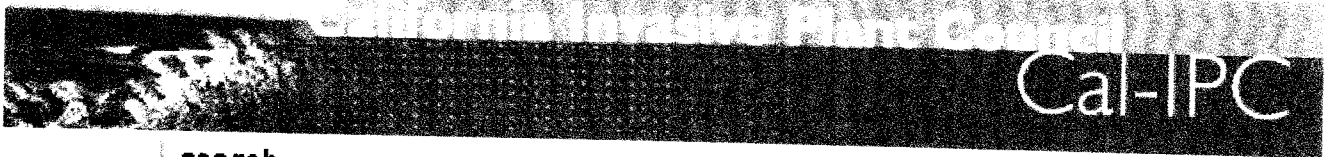
E-Mail [Web Master](#)



search

California Exotic Pest Plant Council *Documents*

Documents	Description
<u>Pest Plant List</u>	Cal-EPPC's categorized list of pest plants concern in California
<u>CalEPPC News</u>	The CalEPPC News is a quarterly publica tion for members. All these files are in pdf format.
<u>2002 Symposium Proceedings</u>	View and read each presentation in pdf for
<u>1997 Symposium Proceedings</u>	View and read each presentation in pdf for
<u>1996 Symposium Proceedings</u>	View and read each presentation in pdf for
<u>1995 Symposium Proceedings</u>	View and read each presentation in pdf for
E-Mail <u>Web Master</u>	


 search

Documents

Useful Links

Categories listed below:

Other EPPC web sites

California

Other states

Federal

Organizations

Restoration

Weed Control

Other interesting sites

Other EPPC web sites

Florida Exotic Pest Plant Council

FlEPPC was founded in Florida in 1984 for the purpose of focusing attention on the impacts exotic pest plants have on biodiversity...

Missouri Exotic Invasive Plant Page

A list of non-native plants that threaten Missouri's native biodiversity.

Return to top of page

California

CalFlora

A botanical database compiling herbaria records and more.

California's Noxious Weeds

Notes on identification, biology, and management of plants defined as weeds by California law.

Invasive Spartina Project

A coordinated regional effort dedicated to preserving California's coastal resources through the elimination of invasive species of *Spartina* (cordgrass).

Team Arundo del Norte

A partnership dedicated to the reduction and eventual elimination of *Arundo donax* (Giant reed) where it threatens rivers, creeks and wetlands in central and northern California.

California Native Habitats

California organizations and agencies for ecological restoration

California Noxious Weed Control Project Inventory

Requests your project reports...

Return to top of page

Other States

Colorado Weed Management Association

CWMA members are people who care about and are working to preserve Colorado's natural resources from the threat of non-native noxious weeds. CWMA is the single best source of noxious weed information in Colorado. Whether you are looking for weed control assistance, or just enjoy Colorado's natural beauty and would like to help keep it native and natural-the Colorado Weed Management Association can help.

Exotic Plant Species of the Colorado Plateau

Colorado Plateau Research Station, Flagstaff, Arizona, USA
ecology and distribution, photographs, federal, regional,
and state exotic plant species information.

An Assessment of Exotic Plant Species of Rocky Mountain National Park

Reports on the ecology, biology, and control of invasives plants in Rocky Mountain National Park.

University of Florida - Center for Aquatic and Invasive Plants

Information and pictures of some 35 invasive species, aquatic and terrestrial (in addition to a couple of hundred native species).

Florida Weeds

Authors. Introduction. Illustrated glossary. Scientific names. Common Names.

AgriGator - UF/IFAS Resources

West Florida Research and Education Center. The Jay Research and Education Center (JAY REC), part of the University of Florida's Institute of Food and Agricultural Sciences (IFAS)

On-Line Book: Nonindigenous Aquatic and Selected Terrestrial Species of Florida

Developed from a literature review during September 1993-January 1994, with additional 1995 references added to the text during the review and editing stages. Some information is on high-profile nonaquatic species. When experts were available, unpublished information about some groups of species was also obtained...

Hawaii Agriculture Research and Education

Hawaiian Ecosystems at Risk (HEAR) Project

The goal of the HEAR project is to provide resources (technology, methods, and information) to resource managers statewide to aid the fight against invasive alien species.

Return to top of page

Federal

Alien Plant Invaders of Natural Areas

A web-based, public education project of the Native Plant Conservation Initiative's Alien Plant Working Group, providing information about the serious threat and impact of invasive alien (exotic) plants to the native flora, fauna, and natural ecosystems of the United States.

Animal and Plant Health Inspection Service:

Activities and Organization, APHIS Forms, Publications, Fact Book, What's New!, Subject Index, Guided Tour, Travelers' Tips, APHIS Gopher, Phone Directory, Import-Export Directory

Biological Assessment and Taxonomic Support

BATS provides APHIS with the leadership in biological expertise required to identify, assess and manage plant pest risks. These services provide a scientific basis for regulatory decisions concerning the movement of plants, plant products and plant pests. BATS provides these services to PPQ, units of APHIS other than PPQ, Federal and State agencies, foreign countries, industry and the public. BATS represents PPQ and/or is the official liaison with other agencies in the Federal government, professional scientific societies, working groups, and advisory committees with respect to risk analysis of plant pests and national authority in plant pest identification.

Extension Toxicology Network

A Pesticide Information Project of Cooperative Extension Offices of Cornell University, Michigan State University, Oregon State University, and University of California at Davis. Major support and funding was provided by the USDA/Extension Service/National Agricultural Pesticide Impact Assessment Program.

Federal Interagency Weed Committee

The FICMNEW was established under an MOU signed by 17 Federal Agencies and is responsible for coordinating a Federal Government approach for the management of weeds. This includes providing information about agency needs and making recommendations to Departmental leadership on research, technology transfer, and management actions. The Federal Agencies are cooperating to achieve the advancement of knowledge and skills, good land stewardship practices and public awareness of noxious weed issues and management.

Native Plant Conservation Initiative

The NPCI is a consortium of ten federal government member agencies and over 110 non-federal cooperators representing a various disciplines within the conservation field: biologists, botanists, habitat preservationists, horticulturists, resources management consultants, soil scientists, special interest clubs, non-profit organizations, concerned citizens, nature lovers, gardeners.

U.S. Fish and Wildlife Service

Invasive Species Program - Activities to prevent and control invasive plant and animal species that severely impact the lands and waters of the United States, including resources managed within the National Wildlife Refuge System, have become a priority for the U.S. Fish and Wildlife Service as we expand our efforts to conserve and protect our nation's native fish and wildlife habitats.

[Return to top of page](#)

Organizations

WSSA-Weed Science Society of America

WSSA Information Information about Weeds, Herbicides, and Other Weed Sciences Related Pages Mail to System Operator, Dave Pike. Page Maintained by Nathan L. Sandland.

[Return to top of page](#)

Restoration

Wildlands Restoration Team:

The Wildlands Restoration Team is a volunteer based organization dedicated to preserving the rich biological diversity of the Santa Cruz Mountains Since its inception in 1990, thousands of people have given their time and resources to help restore this priceless wild habitat.

[Return to top of page](#)

Weed Control

[Weed Research and Information Center](#) - University of California
Weed information, calendar of events, links to other weed sites

[California's Common Aquatic Weeds](#)

Photographs
Herbicide Susceptibility
Biological Control
Mechanical Harvesting
Habitat Manipulation

[Aquatic Weed Guide](#)

Biological Control With Fish and Insects,
Herbicidal Control,
Introduction to Aquatic Weed Control

[Crop Sciences Extension](#)

University of Illinois in Urbana-Champaign:
List of herbicides and manufacturers
Pictures of over 170 weeds in various stages
A variety of articles dealing with pesticides water and the environment
A collection of photos displaying crop injury

[Statewide Integrated Pest Management \(IPM\)](#) - University of California
UC Pest Management Guidelines. A database of UC recommended alternatives for controlling pests. Descriptions of UC IPM on-line resources, microcomputer software and databases, publications, slide sets and videos, training programs, and how to order or schedule them. You can also link to other UC pest management web sites from here. Direct links to specific IPM Pest Notes:

[Bermudagrass](#)

[Kikuyugrass](#)

[Mistletoe](#)

[Wild Blackberries](#)

[Yellow Starthistle](#)

[Weed Control Guide](#)

Principles of Weed Control, Herbicide, Application Equipment and Techniques, Poisonous Plants, Weed Control in Fruit and Nut Crops, Weed Control in Field Crops and Pasture Grasses

[Return to top of page](#)

Other interesting sites

[INVADERS Database System](#)

For early detection and tracking of invasive alien plants and weedy natives. The INVADERS Database is a comprehensive database of exotic plant names and weed distribution records for five states in the northwestern United States. The spatial and temporal spread of weeds can be displayed using the historic distribution records in INVADERS. The INVADERS web site contains actual examples of how land management and weed regulatory agencies are using these data to improve their weed management programs. Noxious weed listings are provided for the 48 contiguous US states and six southern tier Canadian provinces.

The Biotechnology Information Center (BIC)

One of ten information centers at the National Agricultural Library of the US Department of Agriculture - ARS. BIC provides access to a variety of information services and publications covering many aspects of agricultural biotechnology.

The Nature Conservancy

TNC's national web site

The Nature Conservancy

Wildland Weeds Management & Research Program

Return to top of page

E-Mail [Web Master](#)